

# Leica ForensicMAP Pro

Powerful scene mapping and animation leverages vivid Leica 3D laser scan data



Crush analysis tools for easy measurement extraction from rich scan data

Easy creation of accurate 2D scene diagrams by simple tracing

Choose beginner or advanced operation mode as required

## For law enforcement and accident reconstruction specialists

The evidentiary collection and investigative benefits of 3D laser scanning are quickly revolutionizing how forensic investigations are conducted. ForensicMAP Pro, the latest addition to the industry leading suite of software products of Leica Geosystems, combines built-in support of Leica 3D laser scan data with a robust desktop forensic mapping software.

Law Enforcement Professionals and Accident Reconstruction Specialists finally have the complete set of tools they need to efficiently work with Leica scanners and/or any brand of total station or GPS. The results are the latest in compelling and irrefutable evidentiary documentation including accurate 2D maps and diagrams, 3D models and animations. Crime and accident-specific tools include formulae calculators for crash reconstruction based on speed, deceleration factor, and kinetic energy; unit conversions; trigonometry; momentum; kinematics.

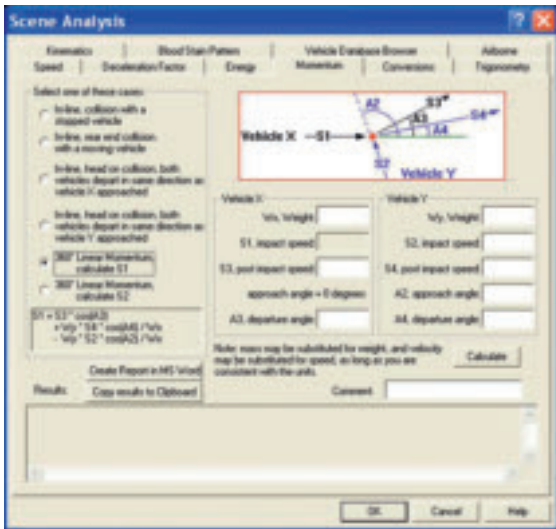
## Features and Benefits

- Full, direct support of Leica Geosystems scanner data
- Integrity of evidence is assured by a protected database which tracks all changes
- Complete 2D and 3D CAD drawing tools
- Smooth integration with manual measurements, total station, GPS and Evidence Recorder data
- Powerful forensic animation features allow creation of compelling reconstructions

- when it has to be **right**

**Leica**  
Geosystems

# Leica ForensicMAP Pro 1.0



The wizard style input sheets for all of the various analysis calculators are all accessible from one main dialog. They offer many of the industry standard, proven equations in a modern and easy to use "known-value entry" style interface. With included diagrams and graphs, the input and output values are easily understood, yet provide the reliable scientific results required for court ready exhibits of evidence.

## Evidence Integrity

Leica ForensicMAP Pro holds measurement data in a protected database. Warnings are issued when any change is attempted and all changes are securely noted in the database. The original data is never altered.

## Laser Scan Data

Leica ForensicMAP Pro includes direct support for and use of Leica point cloud data. These high-definition, "virtual scenes" contain millions of dense, measured points captured by 3D laser scanners. Users can virtually visit and revisit the scene as if they were at the scene "frozen in time" to easily measure and draw on their desktop. This enables professionals to continually test new theories that may arise over time.

## 2D and 3D Drawing Tools

Leica ForensicMAP Pro is a state-of-the-art, 3D computer-aided drafting (CAD) program, with direct AutoCAD compatibility. A Road Intersection Wizard allows easy creation of streets, roads and intersections. Automatic generation of 3D terrain surfaces can depict the 'lay of the land'. This allows investigation of line-of-sight issues and witness perspectives. Any view can be displayed as high-quality, rendered 3D output to the screen and saved as a .bmp image file.

## Crash and Crime Scene Tools

User have over 7,000 2D and 3D crash and crime scene mapping symbols at their disposal, including vehicle symbols for many makes and models. Users can also add and manage custom symbols. Included calculators provide formulae for analyzing speed, deceleration factor, kinetic energy, unit conversions, trigonometry, momentum (360° and in-line), and kinematics.

## Total Station and GPS Data

Standard survey data management tools provide spreadsheet style access to manage raw data, targets, line-coding or direct entry of baseline/offset and triangulation measurements. An AutoMAP feature lets users customize how field-coded point data is automatically imported and represented as a drawing.

Leica ForensicMAP Pro Specifications		Hardware and System Requirements
<b>Measurement System Support</b>	Communicates with and directly reads most common total station and data collector file formats - raw data or coordinates (or both) ASCII format. Reads all laser scan point cloud data from Leica Cyclone	<b>Processor:</b> 2 GHz Pentium® 4 or higher <b>RAM:</b> 512 MB RAM (1GB or more recommended) <b>Hard Disk:</b> 1.5 GB free space for install
<b>Evidence Integrity</b>	Separate protected database for measurement data Automated backup Change history notation automatically enforced	<b>Network card:</b> Ethernet (required for licensing) <b>Display:</b> SVGA or OpenGL accelerated graphics card with 1024x768 or better resolution settings.
<b>CAD Tools</b>	Complete AutoCAD compatible CAD system AutoMAP generation from field coded point data Forensic symbols library included Wizards and utilities for drawing automation	<b>Operating system:</b> Microsoft Vista (32 only), or Microsoft Windows XP (SP1 or higher) (32 only) <b>File System:</b> NTFS
<b>Customization</b>	State-of-the-art customizable interface and drawing environment	
<b>Analysis</b>	Tools to analyze speed, deceleration factor, kinetic energy, unit conversions, trigonometry, momentum (360° and in-line) and kinematics	
<b>Deliverables</b>	2D and 3D dwg (AutoCAD format) and dxf (neutral CAD exchange format). Images in bmp and wmf format	

Windows is a registered trademark of Microsoft Corporation. Other trademarks and trade names are those of their respective owners.

Illustrations, descriptions and technical data are not binding. All rights reserved. Printed in Switzerland - Copyright Leica Geosystems AG, Heerbrugg, Switzerland, 2009. 776613enUS - IX.09 - RDV